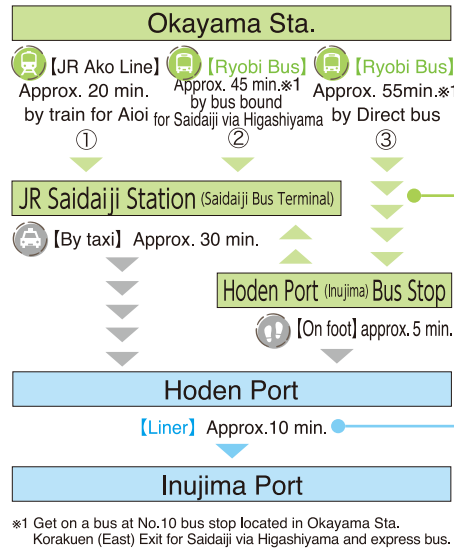


# INUJIMA



## Access to Hoden Port by JR or bus



## Ryobi Group Bus and Train Customer Center

☎086-230-2130 (9AM-5:30PM on weekdays)  
[Nonstop Bus connecting JR Okayama Station and Hoden Port]  
Inujima Access Bus (Departs from and Arrives at JR Okayama Station)

| Ryobi Bus                                     |                          | Ryobi Bus                  |                               |
|---|--------------------------|----------------------------|-------------------------------|
| Departs from Bus Stop<br>⑤ at Okayama Station | Arrives at<br>Hoden Port | Departs from<br>Hoden Port | Arrives at<br>Okayama Station |
| 9:52  | 10:45                    | 16:05                      | 17:05                         |
| ※4 11:52                                      | 12:45                    | ※4 17:45                   | 18:45                         |

※4 Operating on Saturdays, Sundays and National Holidays during "Setouchi Triennale 2025".  
■ One-way fare : Adult 880yen · Child 440yen  
■ Operating Period : From April 4, 2025  
(All buses shown above are out of service when Inujima Seirensho Art Museum is closed.)  
[Nonstop Bus connecting Hoden Port and JR Saidaiji Station]  
※ Operating on Saturdays, Sundays and National Holidays during "Setouchi Triennale 2025"

| Ryobi Bus                  |                                 | Ryobi Bus                      |                                     |
|----------------------------|---------------------------------|--------------------------------|-------------------------------------|
| Departs from<br>Hoden Port | Arrives at<br>Kannonin Iriguchi | Arrives at<br>Saidaiji Station | Arrives at<br>Saidaiji Bus Terminal |
| 13:50                      | 14:10                           | 14:15                          | 14:20                               |

■ One-way fare : Adult:510yen · Child:260yen (To Saidaiji)  
Adult:470yen · Child:240yen (To Kannonin Iriguchi)  
■ Operating Period : From April 19, 2025  
(All buses shown above are out of service when Inujima Seirensho Art Museum is closed.)

## Hoden Port and Inujima Port

[Liner] Akebono Maritime Co., Ltd. ☎086-947-0912  
■ Time required: approx. 10 min. by liner  
■ Capacity : 60 persons  
■ Adult 400yen · Child 200yen  
※ Extra charges may apply for baggage.

| Depart Hoden Port |         | Depart Inujima Port |         |
|-------------------|---------|---------------------|---------|
| 6:40              | 13:45   | 6:55                | 14:00   |
| 8:00              | 15:15※2 | 8:20                | 15:35※2 |
| 11:00             | 17:00   | 11:15               | 17:15   |
| 13:00             | 18:30※3 | 13:20               | 18:45※3 |

※2 Not in service when Inujima Seirensho Art Museum is closed.  
※3 No service on Sundays.

When it comes to sightseeing in Okayama City, visit and ask  
**Okayama City Momotaro Tourist Information Center TEL ▶ 086-222-2912**  
Hours ▶ 9:00AM-8:00PM / Open every day Access ▶ The East Exit of the Shinkansen boarding area on the 2nd floor of Okayama Station

**Setouchi Triennale 2025** April 18 to May 25, August 1 to 31 and October 3 to November 9, 2025

(As of March, 2025): Issued by Promotional Activities and MICE Division, City of Okayama

## Okayama Kyobashi - Inujima Port - Teshima (Karato Port)

Okayama Kyobashi Cruise, Co., Ltd. ☎086-201-1703  
■ Seating capacity: Seating capacity: 66  
■ Operating Period : Saturdays, Sundays and National Holidays excluding April 29 during "Setouchi Triennale" On the 1st Sunday of March, April, June, July and September

| Depart           | Arrive        | Depart        | Arrive         | Depart         | Arrive                  |
|------------------|---------------|---------------|----------------|----------------|-------------------------|
| Okayama Kyobashi | Inujima       | Inujima       | Karato         | Karato         | Inujima                 |
| 9:40             | 10:45         | 12:10         | 12:45          | 12:55          | 13:30                   |
| Depart Inujima   | Arrive Karato | Depart Karato | Arrive Inujima | Depart Inujima | Arrive Okayama Kyobashi |
| 14:30            | 15:05         | 15:15         | 15:50          | 16:00          | 17:05                   |

| Fare | Kyobashi-Inujima |                 | 2,000yen (1,000yen) |
|------|------------------|-----------------|---------------------|
|      | Adult (Child)    | Inujima-Karato  | 1,000yen (500yen)   |
|      |                  | Kyobashi-Karato | 3,000yen (1,500yen) |

## Inujima Port - Teshima (Iaura Port) - Naoshima (Miyanoura Port)

[High-speed ferry] Shikoku Kisen Co. ☎087-821-5100  
※ Vehicles, two-wheels, and bicycles are not available to board.

| Depart   | Arrive  | Depart         | Arrive         | Depart         | Arrive         | Depart         | Arrive          |
|----------|---------|----------------|----------------|----------------|----------------|----------------|-----------------|
| Naoshima | Teshima | Depart Teshima | Arrive Inujima | Depart Inujima | Arrive Teshima | Depart Teshima | Arrive Naoshima |
| 9:20     | 9:42    | 9:50           | 10:15          | 10:25          | 10:50          | 10:55          | 11:17           |
| 12:10    | 12:32   | 12:40          | 13:05          | 13:10          | 13:35          | 13:40          | 14:02           |
| 14:50    | 15:12   | 15:17          | 15:42          | 15:47          | 16:12          | 16:17          | 16:39           |

※ Not in service when Teshima Art Museum and Inujima Seirensho Art Museum are closed.  
Every year Mar. 1st~Nov. 30th (Mon/Wed/Thu/Fri/Sat/Sun/National Holidays) in service.  
Every year Dec. 1st ~ the end of Feb. (Mon/Fri/Sat/Sun/National Holidays) in service.  
※ Please beware that stopping over at Teshima (Iaura) is not available with a ticket from Naoshima to Inujima.

| Fare          |  | Naoshima-Teshima  | Teshima-Inujima   |
|---------------|--|-------------------|-------------------|
| Adult (Child) |  | 630yen (320yen)   | 1,250yen (630yen) |
|               |  | 1,880yen (940yen) |                   |

## Inujima Port - Shodoshima (Tonosho Port)

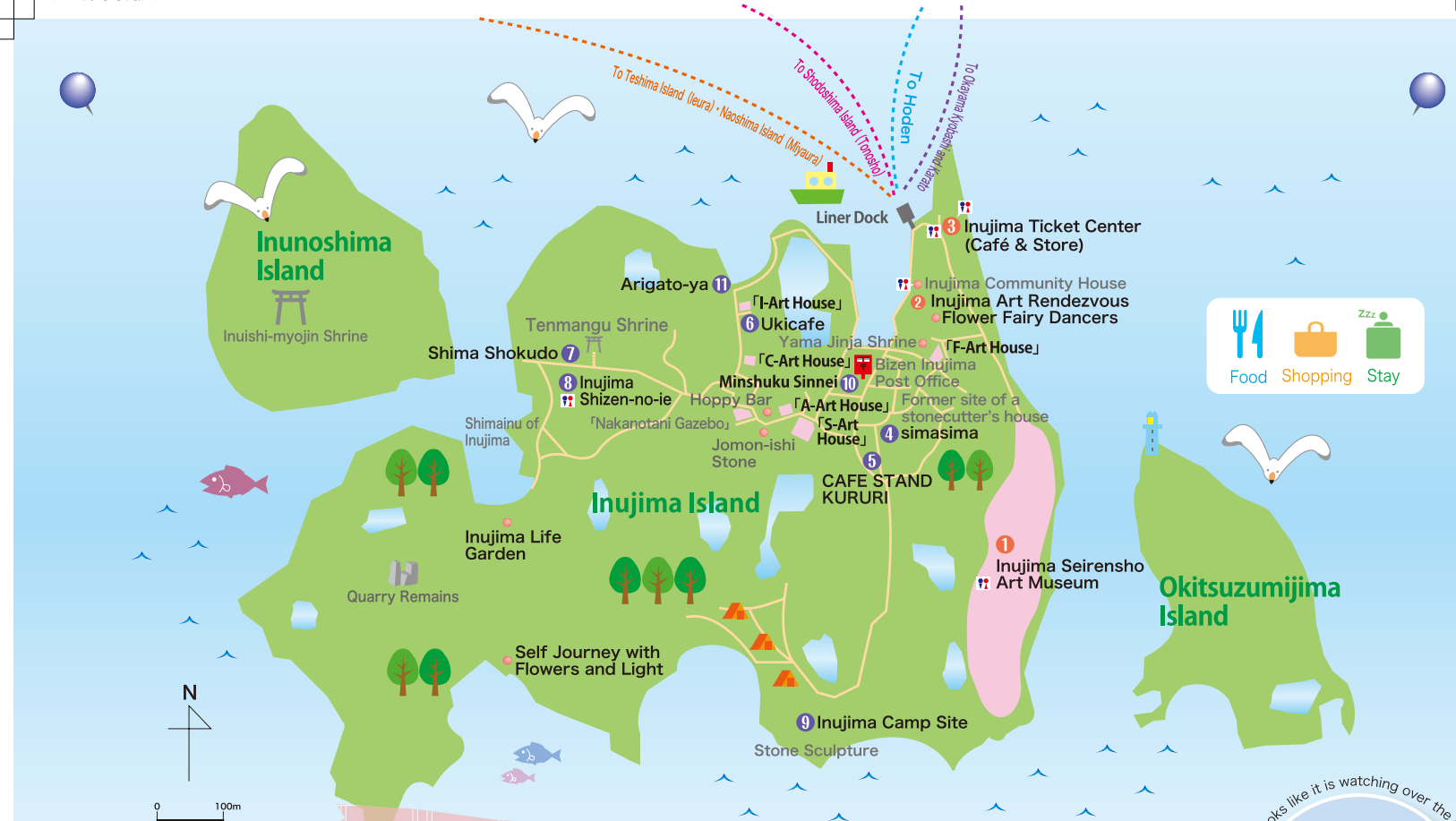
[Temporary Service] Shodoshima Rapid Ferry Co. ☎0879-62-0875  
■ Time required: approx. 25 min. by ship  
■ Limited number of passengers: Seating capacity: 75  
■ One-way fare : Adult: ¥1,500 / Child: ¥750  
■ Operating Period : Fridays, Saturdays, Sundays and National Holidays during "Setouchi Triennale 2025"

| Depart Tonosho | Arrive Inujima | Depart Inujima | Arrive Tonosho |
|----------------|----------------|----------------|----------------|
| 10:05          | 10:30          | 10:35          | 11:00          |
| 12:10          | 12:35          | 12:40          | 13:05          |
| 16:00          | 16:25          | 16:30          | 16:55          |

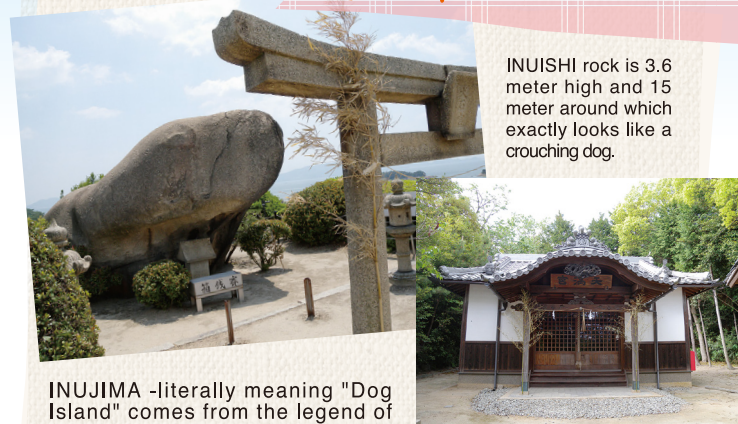


Inujima Seirensho Art Museum Photo: Daisi Aono

Inujima Island is the only manned island in Okayama City, located in the Seto Inland Sea. Its circumference is about 4 km. Inujima Island produced high-quality granite, used for the stone walls of Okayama Castle and Osaka Castle. After Inujima copper refinery had opened in 1909, more than 5,000-6,000 people lived there at its peak. However, the refinery shut down its operation in only 10 years because the price of copper fell sharply. The current population decreases to approx. 40 people, but the island has been spotlighted as the "art island", which reproduces and restores the remains of the refinery as a heritage of industrial modernization to a museum.



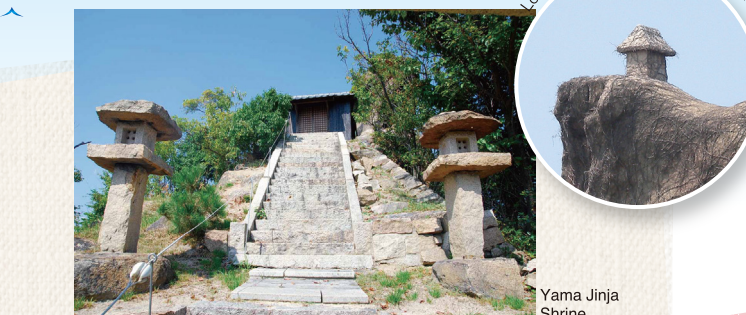
### What is the origin of the name, Inujima...?



INUISHI rock is 3.6 meter high and 15 meter around which exactly looks like a crouching dog.

Tenmangu Shrine

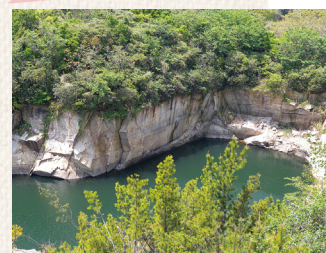
INUJIMA -literally meaning "Dog Island" comes from the legend of Michizane Sugawara's exile when he was caught by the tide on his way to Dazaifu. When he was about to be shipwrecked, he heard the cry of his deceased dog. He followed the cry and survived. The stone believed to contain the spirit of the deity is called "Inu-ishi sama", which means "Dog Stone", and is shrined on the top of the mountain on Inunoshima Island. An ema, a votive picture with a realistic painting of the former Inunoshima Island, remains in the Tenmangu that is dedicated to Michizane Sugawara. \*You may not enter Inunoshima as it is a private area.



Yama Jinja Shrine

The island is famous for producing quality granite (Inujima Mikage) and the rocks were sent to all over Japan. People who were involved in quarry business believed in Yama Jinja Shrine as a god of quarry. There is a mark of a big lantern which is said to play a role of a lighthouse at the back of the shrine. The ponds in the island are the evidence that there was a quarry there. Water filled the ponds now but some ponds were 20-meter deep! Jomon-ishi Stone is engraved with a design called MITSUDOMOE. It was a remain when Osaka castle was repaired.

Inujima Island was used to be called the island of rock.



Quarry Remains

### 9 Inujima Camp Site

An ocean view campground with a tent site, the administrative office and a kitchen facility with equipments for rent. Available from April 15 to October 15. \*Reservation is required up to 10 days before the date you use the facility. Art works made of Inujima stones are dotted in the ground.

Phone : 086-947-1550  
Closed : Tuesdays (Excluding July 15 to August 31)



### 10 Minshuku Sinnei

It is a family-owned rental vacation house which only accepts one party per night (Available even for just one person). You can relax to enjoy yourself without holding back.

Phone : 086-947-0272  
Open everyday (Reservation required)  
<https://www.sinnei-inujima.com>



### 11 Arigato-ya

Accommodation facility based on the concept of "Relaxing time in a good old Japanese quaint style house".  
Phone : 080-2304-1323  
Open everyday (Reservation required)



## 1 Inujima Seirenscho Art Museum / Inujima "Art House Project" / Inujima Life Garden

Inujima Seirenscho Art Museum consists of the remains of the copper refinery, environmentally friendly architecture utilizing natural energy and artworks in the motif of Yukio Mishima. In Inujima Art House Project, you can walk around the village while visiting 5 galleries such as A-Art House, C-Art House and other artworks exhibited outside. Inujima Life Garden provides the place where you can experience the self-sufficient lifestyle in the cycle of nature from food to energy.



Inujima "Art House Project" A-Art House  
Beatriz Milhazes "Yellow Flower Dream" 2018  
Photo : Yoshikazu Inoue



Inujima Seirenscho Art Museum Photo:Daici Ano

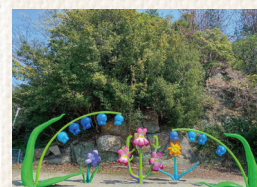
Tel : 086 -947-1112

Opening Hours: 9:00-16:30 (Last Entry: 16:00)

Closed: Tuesdays to Thursdays (From March 1 to November 30), Open on National Holidays and closed on the following workday. If it is a National Holiday on Monday, it is open on the following Tuesday and closed on the following Wednesday. Closed on all days from December to February

Admission: 2,100yen/Online, 2,300yen/Counter (Admission to Inujima Seirenscho Art Museum and Inujima "Art House Project" areas included)  
Please visit the website for more detail. <http://benesse-artsite.jp/en/>

## 2 INUJIMA Art Rendezvous



INUJIMA Art Rendezvous  
"Flower Fairy Dancers"  
Ellie Omiya, 2022  
Photo: Ellie Omiya

Hours: When the museum is open  
Admission: Free

It is a project that provides artworks and events intended to facilitate interaction with others. Artworks created by Artist Ellie Omiya are being scattered in the island.

## 3 Inujima Ticket Center



Octopus rice  
Photo: Yoshikazu Inoue

Phone: 086-947-1112  
Hours: 9:00-17:00  
Closed: Closed when the museum is closed.

There is a café at the ticket center. The original menu that is collaboration with the island people uses the ingredients of Inujima and around the area.

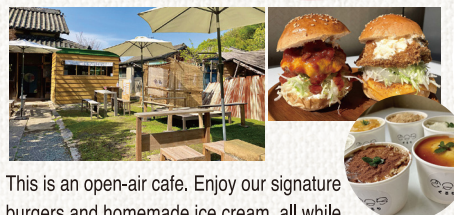
## 4 simasima



E-mail : [inujima4040@gmail.com](mailto:inujima4040@gmail.com)  
Opening Hours : 11:30AM-3:15PM  
Closed : Irregular

This is a café that serves lunch and light snacks. They offer dishes that have been taught to them by the island locals, as well as seasonal cuisine using seafood caught in Seto Inland Sea.

## 5 CAFE STAND KURURI



This is an open-air cafe. Enjoy our signature burgers and homemade ice cream, all while surrounded by lush greenery and under the open sky.

Phone : 050-3185-8025  
Opening Hours : 11AM-3PM/Closed : Irregular  
(Closing Days are posted on Instagram "cafe stand kururi".)

## 6 Ukicafe



This is a café with a large garden and a yellow curtain. There are an earth floor (Doma) and tatami spaces inside the café. Recommendation is pasta using the local ingredients (1,300 yen, single item).  
Phone: 086-947-0877  
Hours: 10:00-17:00/Not in service when Inujima Seirenscho Art Museum is closed.

## 7 Shima Shokudo



You can have breakfast (from 550 yen for Western or Japanese meal) and set dinner (from 800 yen) by reservation. Meals are prepared according to your budget.  
Phone: 090-4890-5133  
Hours: 6:00-8:00, 18:00-21:00 (reservation is required)

## 8 Inujima Shizen-no-ie



Instructors are available so the beginners are also welcome. Please visit the website to see the operating period.  
Phone : 086-947-9001  
Closed : Tuesdays (excluding July 15 to August 31)



This is the self-catering style lodging facility which was renovated former Inujima Gakuen.  
◎Accommodations (1 night for 1 person)  
4PM-10AM of the next day  
Western-style room : Adult 2,090yen, Child 1,040yen  
Japanese-style room : Adult 1,460yen, Child 730yen  
◎Astronomical Observatory : Adult 210yen, Child 100yen (Free of charge for guests)  
◎Sea Kayaking : 310 yen per hour for 1 kayak (Available for 4th graders in elementary school and above)  
◎Stone Craft : 200 yen  
\*Reservation is required up to 10 days before the date you use the facility. Group Discount is applied for more than 20 people. The Pilot and Lobby, where vending machines are installed, are open to the public. Please feel free to stop by for a break from 9AM to 4PM.

